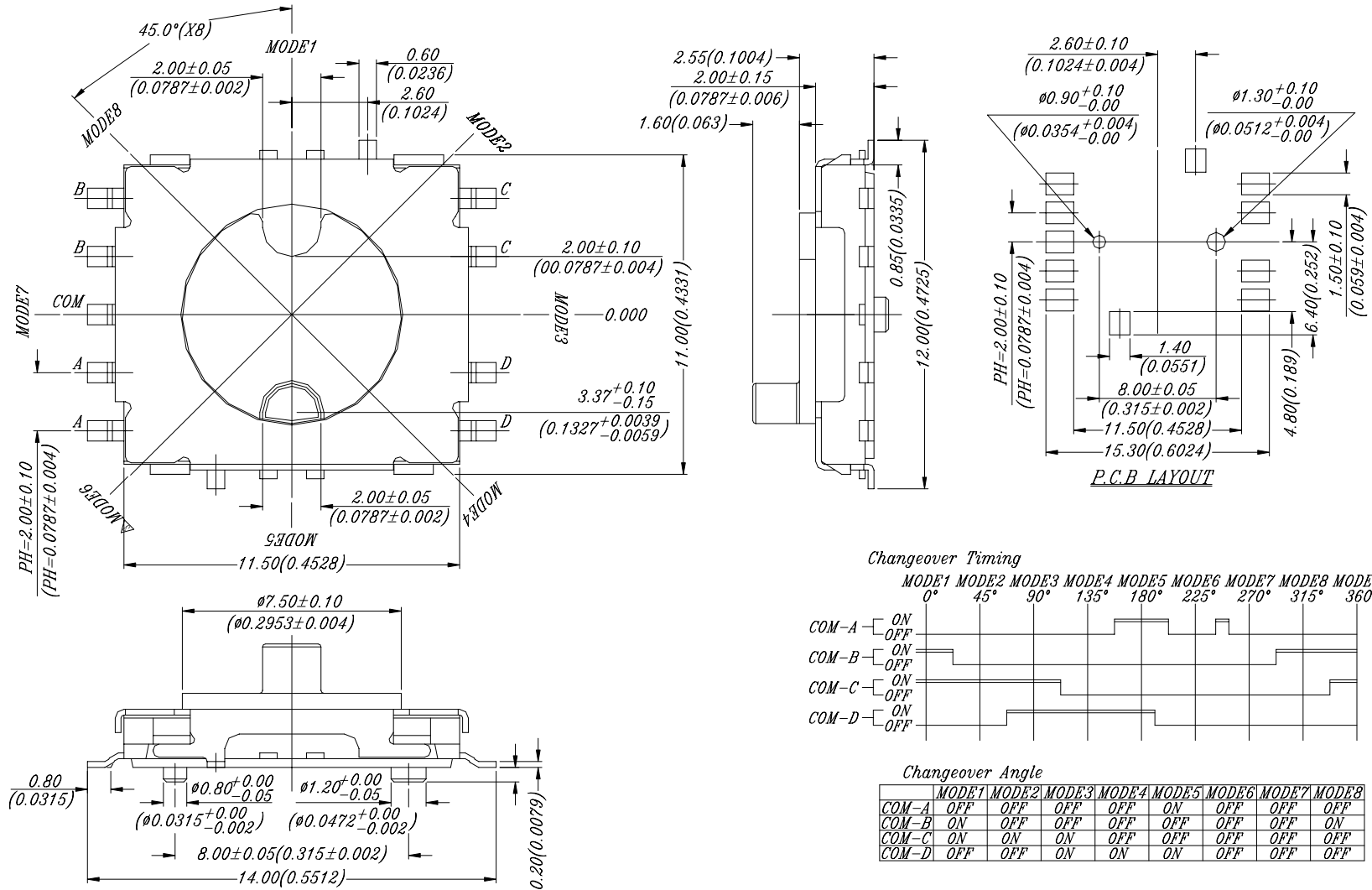


# SRH(M) SERIES



## DIMENSIONS



General Tolerance :  $\pm 0.2\text{mm}$

## HOW TO ORDER

SR  - 8R    -  -

Package Style:  
T/R=Tape & Reel

Soldering:  
V=Lead Free Solderable

=Non-click Actuation Force  
& Color: Black  
N=130 $\pm$ 50gf Actuation  
Force & Color : Brown  
B=40 $\pm$ 30gf Actuation  
Force & Color : Blue

=Without Ground Terminal  
G=With Ground Terminal

Circuit:  
7 = 7 Circuits , Black  
8 = 8 Circuits , Brown

Number of Steps:  
8 =8 Steps

Terminal Type  
M=S.M.T

LOW-Profile Rotary Switch

## SPECIFICATION

### △MECHANICAL

Mechanical Life: 200mΩ max. 10,000 cycles

Operating Force: N=130±50gf

B=40±30gf

### △ENVIRONMENTAL

Operation Temperature: -20°C to +80°C

Storage Temperature: -40°C to +85°C

### △ELECTRICAL

Electrical Life: 200mΩ max. 10,000 cycles

Switching Rating: 25mA, 24VDC

Contact Resistance: (a)70mΩ max. (Initial)

(b)200mΩ max. (final)

Insulation Resistance: 100MΩ min. at 500VDC

Voltage Proof: 300VAC for 1 minute

## MATERIAL

△COVER: Nickel silver

△BASE / STEM: UL94V-0 Nylon High-Temp Thermoplastic

Color: Black

△CONTACT : Alloy Copper

△SPRING PLATE: Stainless Steel

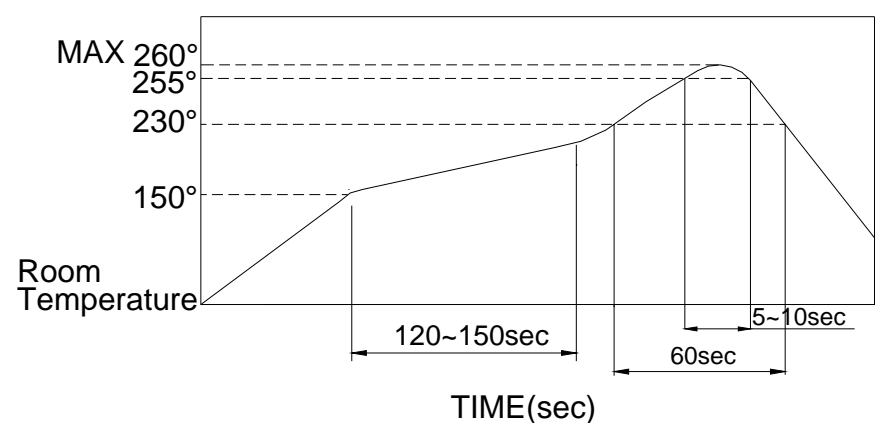
△TERMINAL: Brass with silver plated.

## SOLDERING PROCESS

△HAND SOLDERING : Use a sold iron of 30 watts, controlled at 350°C approximately 5 seconds while applying.

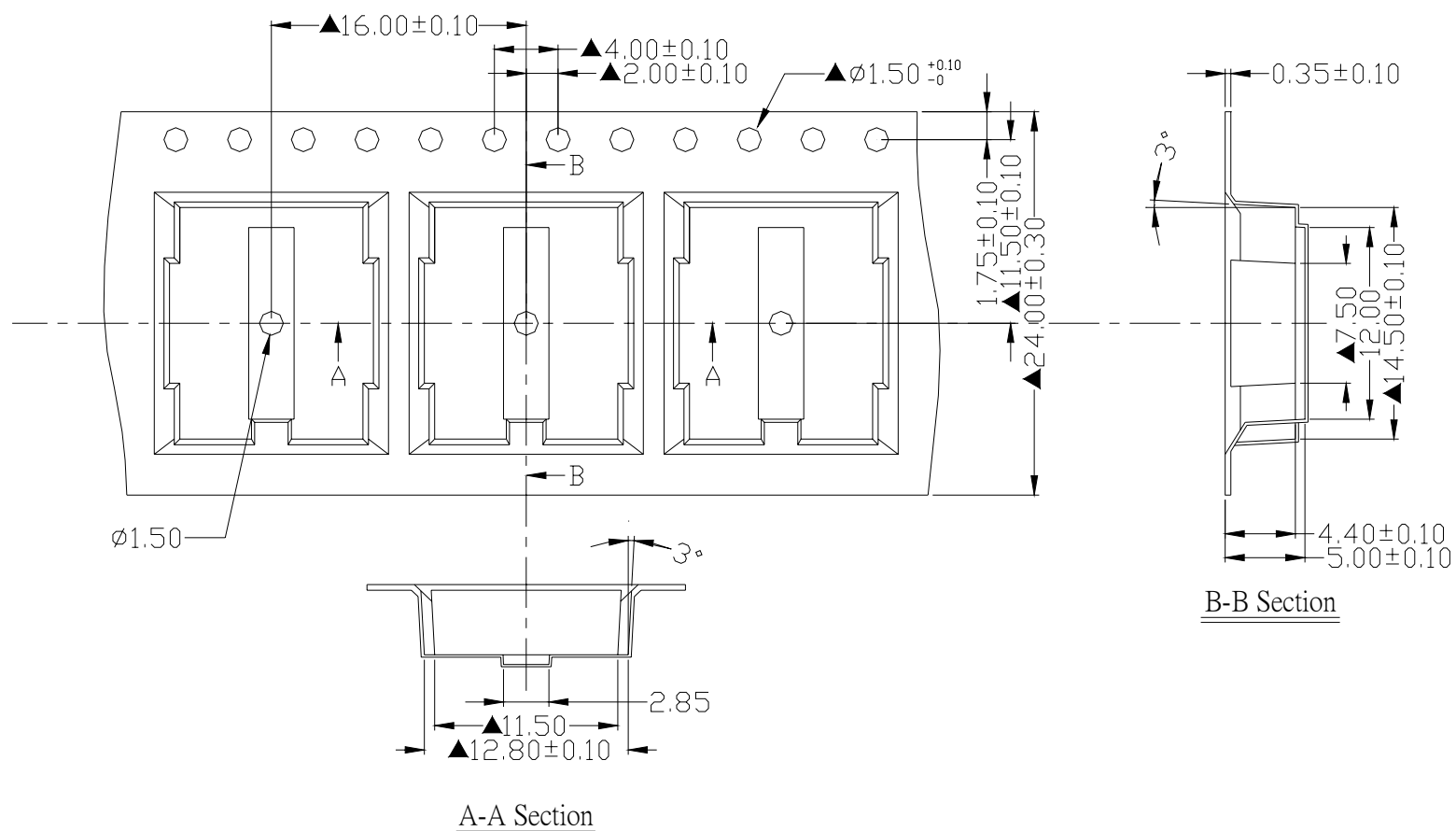
△REFLOW SOLDERING: When applying reflow soldering, the peak temperature or the reflow over should be set at 260°C max.

△Reflow Temperature Profile:



## PACKING

Tape and Reel: 900 pcs/reel



General Tolerance : ±0.1mm