

endrichnews

www.endrich.com

ELEKTRONIK-LESERWAHL "DISTRIBUTOR DES JAHRES 2022"



Jetzt
mitmachen!

Bewerten Sie unseren Service als Spezialdistributor für „Halbleiter, Embedded, Displays und Baugruppen“ und als Spezialdistributor für „Verbindungstechnik, passive Bauelemente, Elektromechanik und Stromversorgungen“.

Danke für Ihre Stimmen!

www.elektroniknet.de/distribution/distributor-des-jahres

ECOVADIS ZERTIFIZIERUNG

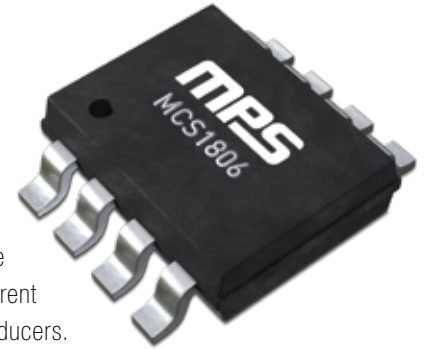
Das Thema Nachhaltigkeit ist im unternehmerischen Umfeld wichtiger denn je, denn ökologische und soziale Probleme nehmen täglich zu. Daher ist es für endrich von großer Bedeutung, die Verbesserung der eigenen Nachhaltigkeit auch als strategisches Ziel einzustufen und anzugehen. Wir haben uns für die internationale Nachhaltigkeitsplattform EcoVadis entschieden, da diese Nachhaltigkeitsrankings erstellt, und unsere Kunden somit unsere Nachhaltigkeitspraktiken transparent einsehen können.

Wir haben in der Nachhaltigkeitsbewertung von EcoVadis den Bronze-Status erreicht!

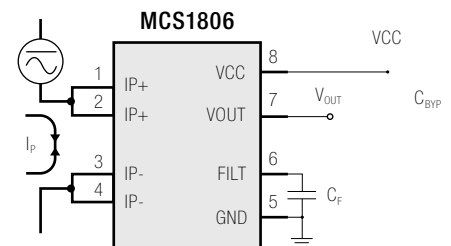
Beurteilt wurden die Bereiche Umwelt, Arbeits- und Menschenrechte, Ethik und Beschaffung.



LINEAR HALL-EFFECT CURRENT SENSOR WITH $\pm 2.5\%$ ACCURACY



The MCS1806 is a linear Hall-effect current sensor for AC or DC current sensing. The Hall array is differential, which cancels out any stray magnetic field. A primary conductor with a low resistance allows current to flow close to the IC, which contains high-accuracy Hall-effect sensors. This current generates a magnetic field that is sensed at two different points by the integrated Hall-effect transducers. The magnetic field difference between these two points is then converted into a voltage that is proportional to the applied current. A spinning current technique is used for a low stable offset. The galvanic isolation between the pins of the primary conductive path and the sensor leads allows the MCS1806 to replace optoisolators or other isolation devices. The MCS1806 requires a minimal number of readily available, standard external components. The device's small footprint saves board area and makes it well-suited for space-constrained applications. The MCS1806 is available in an SOIC-8 package.



The following products are in production

| PART NUMBER* | TYP. SUPPLY VOLTAGE (V) | OPTIMIZED PRIMARY CURRENT RANGE (A) | TYP. SENSITIVITY (SENS) (mV/A) | TOP MARKING | MSL RATING |
|----------------|-------------------------|-------------------------------------|--------------------------------|-------------|------------|
| MCS1806GS-3-05 | 3.3 | ± 5 | 264 | MCS1806 | 1 |
| MCS1806GS-3-10 | 3.3 | ± 10 | 132 | | |
| MCS1806GS-3-20 | 3.3 | ± 20 | 66 | | |
| MCS1806GS-3-30 | 3.3 | ± 30 | 44 | | |
| MCS1806GS-3-40 | 3.3 | ± 40 | 33 | | |
| MCS1806GS-3-50 | 3.3 | ± 50 | 26.4 | | |
| MCS1806GS-5-05 | 5 | ± 5 | 400 | | |
| MCS1806GS-5-10 | 5 | ± 10 | 200 | | |
| MCS1806GS-5-20 | 5 | ± 20 | 100 | | |
| MCS1806GS-5-30 | 5 | ± 30 | 66 | | |
| MCS1806GS-5-40 | 5 | ± 40 | 50 | | |
| MCS1806GS-5-50 | 5 | ± 50 | 40 | | |

*For tape & reel, add suffix -Z (e. g. MCS1806GS-3-05-Z)

FEATURES & BENEFITS

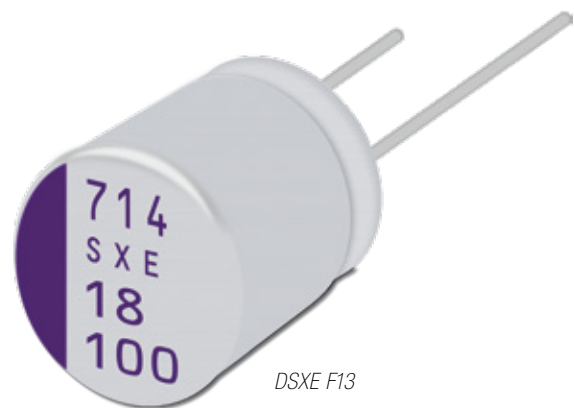
- 3.3V or 5V single supply optional
- Immune to external magnetic fields by differential sensing
- 2.6 kV_{RMS} minimum isolation voltage
- 500 V_{RMS} maximum working voltage
- $\pm 2.5\%$ total accuracy from $T_j = 25^\circ\text{C}$ to 125°C
- 0.9 m Ω internal conductor resistance
- 5 A to 50 A bidirectional range
- Adjustable bandwidth up to 100 kHz
- Ratiometric output from supply voltage
- Output proportional to AC or DC currents
- Factory-trimmed for accuracy
- No magnetic hysteresis
- Integrated shield suppressing capacitive
- Coupling from current conductor to die (up to 10 V/ns)
- Available in an SOIC-8 package
- All MPS parts are lead-free, halogen-free, and adhere to the RoHS directive

**EXTENSION OF THE POPULAR
PANASONIC OS-CON SXV/SXE/SVPE SERIES**

**HAVE A
LOOK**

Solid capacitors with conductive polymer offer highest ripple current and lowest ESR values in SMD as well in radial design with the industry's longest life time up to 20000 hr @ 105 °C.

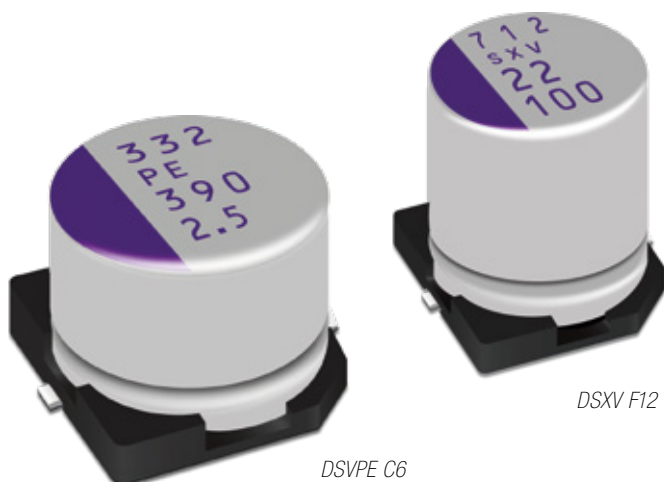
Panasonic announced the extension of their popular polymer capacitors Os-Con SXV/SXE/SVPE series by 6 more part numbers. The ultra high voltage series "SXV"(SMD) and "SXE"(THT) are now enhanced by a 72Vdc/82 µF version and offers one of the highest CV products of the series. The "SVPE" (SMD) series, that focuses mainly on low ESR and high capacitance offers now two new models with 2.5Vdc/820 µF and 6.3Vdc/390 µF. All new part numbers have been developed to follow the market demand and are ideal solutions for high current DC/DC converters for both input and output side.



DSXE F13

New items

| SERIES | SHAPE | TYPE | VOLTAGE Vdc | CAPACITANCE µF | ESR mOhm | RIPPLE CURRENT (105 °C) mA | ENDURANCE | SIZE CODE |
|--------|-------|-------------|-------------|----------------|----------|----------------------------|---------------|--------------------|
| SXV | SMD | 72SXV82M | 72 | 82 | 28 | 3100 | 125°C/1000 hr | F12 (10 x 12,6 mm) |
| SXE | THT | 72SXE82M | 72 | 82 | 28 | 3100 | 125°C/1000 hr | F13 (10 x 13 mm) |
| SVPE | SMD | 2R5SVPE820M | 2.5 | 820 | 10 | 3900 | 105°C/2000 hr | C6 (6,3 x 5,9 mm) |
| SVPE | SMD | 6SVPE390M | 6.3 | 390 | 10 | 3900 | 105°C/2000 hr | C6 (6,3 x 5,9 mm) |



DSXV F12

DSVPE C6

FEATURES

- Very low ESR
- Very high ripple current
- Very long life time
- Ultra high voltage (SXV/SXE series)
- Very low ESR and high capacitance (SVPE series)

APPLICATIONS

- DC/DC converter in industrial, consumer and 3G applications
- Server, 5G, base-station for DC/DC input
- Game, server for DC/DC output

TAILOR-MADE SOLID STATE LIGHTING SOLUTIONS

Audax Electronics is an original design manufacturer based in Brazil and enables its light engines with the latest technologies.

Using the latest SMD technologies, for a variety of indoor, outdoor, and horticultural applications, it also has a complete electronic manufacturing area to produce your project according to international standards. These projects can cover both electronics and optics, thermal management, and mechanical validation.

| PART NUMBER | MODEL | RAD. POWER | POWER |
|-------------|--|------------|-------|
| 80338000100 | COB UVC 19 x 16 mm | 70 mW | 4 W |
| 80338100100 | COB UVC 24 x 19 mm | 280 mW | 16 W |
| 80338200100 | COB UVC 38 x 38 mm | 630 mW | 36 W |
| 80338300100 | COB UVC 38 x 38 mm | 120 mW | 64 W |
| 80367200100 | COB UVC 38 x 38 mm | 750 mW | 100 W |
| 80405100100 | VIOLETTA Development Kit | 70 mW | 4 W |
| 80397300100 | VIOLETTA UVC 40 x 30 mm | 70 mW | 4 W |
| 80397400100 | VIOLETTA UVC Ø86 mm | 210 mW | 12 W |
| 80397500100 | VIOLETTA UVC 80 x 80 mm | 280 mW | 16 W |
| 80338400100 | VIOLET UVC 281 x 19.2 mm + Alert Light | 420 mW | 33 W |
| 80338500100 | VIOLET UVC 281 x 19.2 mm + Alert Light | 560 mW | 38 W |
| 80338600100 | VIOLET UVC 281 x 19.2 mm | 840 mW | 48 W |

UVC LIGHT ENGINES PORTFOLIO

With the advances of UVC sterilization LED technology, Audax Electronics has partnered with Crystal IS, manufacturer of Klaran UVC LEDs, to provide you with a high quality UVC LED solution for disinfection, launching its brand new portfolio of UVC light engines. Because of their small form factor, the UVC LEDs can be implemented into a wide range of applications. Audax Electronics offers a variety of solutions that are also compatible with LEDiL optics and Bender+Wirth holders.



FEATURES

- UV emission type C
- Wavelength: 260 – 270 nm
- Efficiency up to 2.1 %

APPLICATIONS

- HEPA filters
- Water purification
- Medical sterilization
- Infectious disease control

KLARAN
 CONFIDENT

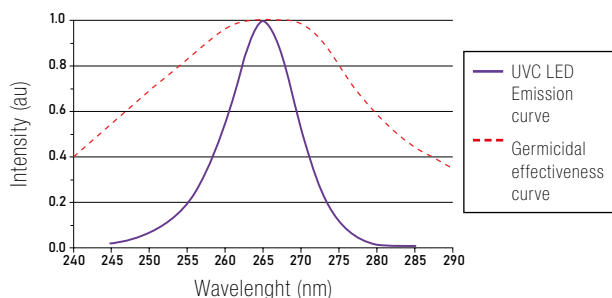
HOW DOES UVC RADIATION WORK?

Although illuminance is measured relatively with the human eye perception, the same is not applicable when using ultraviolet radiation.

HOW DOES UVC RADIATION WORK?

All radiation is a form of energy. A given ultraviolet (UVC) power source is ought to be measured in radiant power, considering the distribution of energy along the spectrum, measured with typical units of mW (milliwatts).

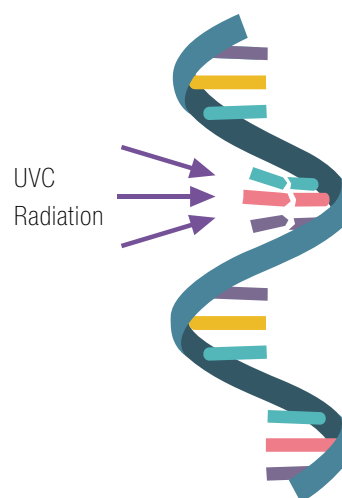
Spectral Power Distribution



RNA RIBBON
(before)



RNA RIBBON
(after)



VIOLETTA DEVELOPMENT KIT

It is widely accepted that it is not necessary to kill pathogens with UV light, but rather apply enough UV light to prevent the organism from replicating. It is also proven scientifically that the LED uniqueness of controlling light emission to a specific 265 nm wavelength peak can result in higher absorption by organisms. Therefore, disabling more effectively pathogens such as Adenovirus and SARS-CoV-2 (COVID-19). The UV doses required to prevent replication are orders of magnitude lower than required to kill, making the cost of UV treatment to prevent infection commercially viable. Interested? Test out our Violetta development kit!



UVC light engine design is one of the many capabilities that Audax Electronics can offer. Check out our website for more information.

LOW-THD-LOUDSPEAKER P40CR30PC FROM VANSONIC ENTERPRISE CO. (VECO)

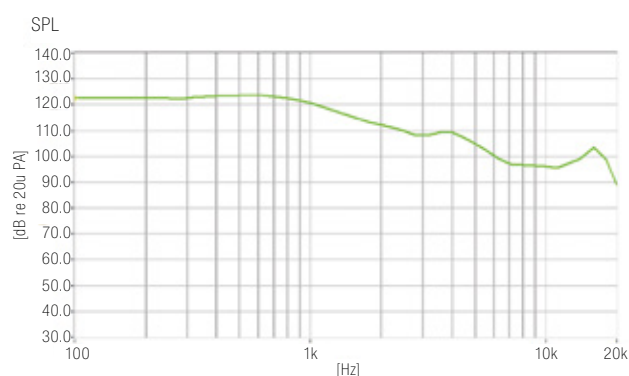
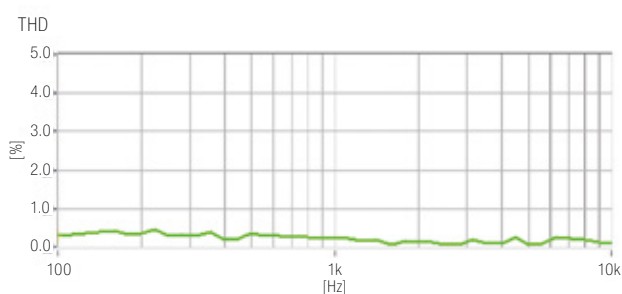
The well-known Taiwan-based acoustic parts manufacturer VECO recently introduced a new state-of-the-art speaker capsular system, mainly for use in applications such as highend headsets, phone/doorphone handsets and alike.

When being driven at 10 mW input power, the distortion level is still maximum 2% in a frequency range from 100 Hz to 8 kHz, which mainly contributes to human audibility and therefore is most important for ensuring clarity of sound and finally producing an excellent audibility.

For try-out, first testing and evaluation purposes, a limited number of samples is already available from Endrich Headquarters. So if interesting for you, please contact our staff as mentioned below.



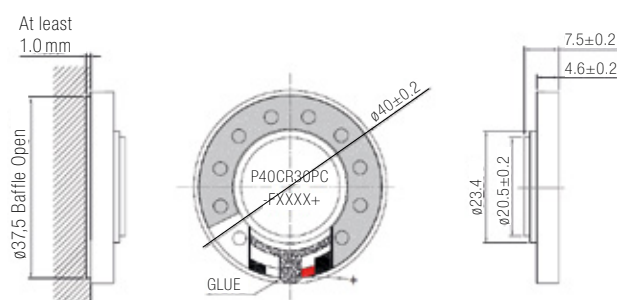
Low-THD-loudspeaker
P40CR30PC



FEATURES

- Round shape with outer housing diameter of 40 mm
- Flat height of nominal 7.5 mm only
- DC resistance 30 ohm (equivalent to a nominal impedance of 32 ohm)
- Normal input driving power is 15 mW, while the item can also endure driving with a short-time peak input power of up to 30 mW, and should still operate normally afterwards
- Smooth SPL response curve without sharp peaks or dips for audible frequency range
- Very low THD (typically less than 0.5% as per conditions mentioned in data sheet)

Mounting recommendation

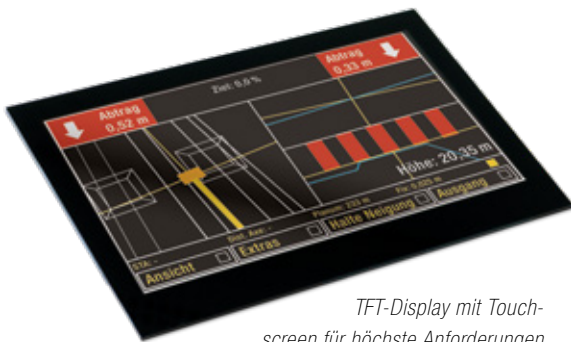


UNSER WEBINAR IM JULI

 WEBINAR

Einladung zum Webinar: Maßgeschneiderte Lösungen für Displays, Touch- und Embedded-Systeme

Wir laden Sie dazu ein an, unserem Webinar am 13. Juli 2022 teilzunehmen. Erfahren Sie alles über moderne HMI-Systeme, die sich hauptsächlich aus den Grundkomponenten Display, Touchscreen und Embedded-System zusammensetzen.



TFT-Display mit Touchscreen für höchste Anforderungen

Die Herausforderung bei der Integration dieser Komponenten besteht darin, die passende Lösung im Spannungsfeld zwischen Kosten, Time-to-Market, Performance, Zertifizierung und Verfügbarkeit zu finden.

Wir von Endrich können Sie hierbei bei der Auswahl unterstützen und bei Bedarf auch komplette, kundenspezifische Baugruppen entwickeln und liefern.

Im Webinar werden die wichtigsten Aspekte der Systemintegration angesprochen. Eventuell haben Sie aber auch schon sehr konkrete Fragen. Sprechen Sie uns daher gerne an. Wir sammeln Ihre Anregungen und werden im Webinar auf gewünschte Themenschwerpunkte gezielt eingehen.

Wir freuen uns auf Sie!

**Registrieren Sie sich für unsere Webinare unter folgendem Link:
www.endrich.com/de/events**

**Presentation
language:
German**

**Maßgeschneiderte
Lösungen für Displays,
Touch- und Embedded-
Systeme**

13. Juli 2022
10:00 Uhr – 11:00 Uhr



*Das PicoCore CoM-Board –
klein aber leistungsstark!*

EINLADUNG ZUR EMBEDDED WORLD 2022 – ENDLICH WIEDER LIVE IN NÜRNBERG



Besuchen Sie uns vom 21. – 23. Juni 2022 auf der embedded world Exhibition & Conference, der weltweit führenden Fachmesse zum Thema Embedded Systems, in Nürnberg: Stand 1-460 in Halle 1



Unsere IoT-Produkt Highlights

Wir von Endrich, als Ihr Elektronik Design-In-Distributor, können durch unsere technische Expertise und unser breit aufgestelltes Produktportfolio Ihre Applikation ganzheitlich verstehen. Dadurch ermöglichen wir Ihnen eine Make-or-Buy Entscheidung, um Ihre Entwicklungszeiten zu verkürzen.

Wir laden Sie auch in diesem Jahr zur embedded world auf unseren Stand ein, auf dem sich alles rund um das Thema IoT dreht. Unsere Themenschwerpunkte sind "Intelligent Connected Sensors", "Data Visualization Gateway" und "Endrich Cloud Services". Hierzu präsentieren wir Ihnen unsere neuesten Produkte.

Im Bereich **"Intelligent Connected Sensors"** zeigen wir in Live-Demos, wie mit den neuesten LPWA-Technologien Cat-NB1, Cat-NB2, Cat-M1 und Cat-M2, aber auch mit Bluetooth BT5.1 Daten schnell und sicher in die Cloud übertragen werden können.

Die sehr performanten Core i5 Touch PCs, i.MX8 Embedded Boards, die weißesten und schnellsten E-Paper Displays sind nur eine kleine Auswahl an Produkten im Bereich **"Data Visualization Gateway"**.

Mit den **"Endrich Cloud Services"** stellt Endrich dem Embedded Entwickler eine mehrschichtige cloudbasierte Lösung von der Infrastruktur (IaaS) über die Plattform (PaaS) bis hin zum Softwareservice (SaaS) zur Verfügung.

Für Ihren Messebesuch stellen wir Ihnen gerne eine kostenfreie Dauerkarte zur Verfügung. Lösen Sie dazu einfach Ihren persönlichen Gutscheincode **ew22466856** unter folgendem Link ein: embedded-world.de/gutschein

Wir nehmen uns Zeit für Ihre individuellen Bedürfnisse! Lassen Sie uns deshalb bereits im Vorfeld einen Termin vereinbaren. Sie erreichen uns unter: embedded@endrich.com

Wir freuen uns auf Ihren Besuch!
Ihr Endrich Team

HEADQUARTERS

endrich Bauelemente Vertriebs GmbH
P.O.Box 1251 · 72192 Nagold, Germany
T +49 7452 6007-0
E endrich@endrich.com
www.endrich.com

SALES OFFICES IN EUROPE

France
Paris:
T +33 1 86653215
france@endrich.com

Lyon:
T +33 1 86653215
france2@endrich.com

Spain
Barcelona:
+34 93 2173144
spain@endrich.com

Bulgaria
Sofia:
bulgaria@endrich.com

Austria & Slovenia
Gmunden:
+43 1 6652525
austria@endrich.com

Romania
Timisoara:
romania@endrich.com

Hungary
Budapest:
T +36 1 2974191
hungary@endrich.com

Switzerland – Novitronic
Zurich:
T +41 44 30691-91
info@novitronic.ch