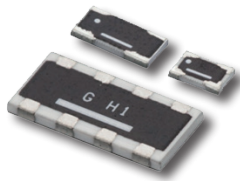


THIN FILM PRECISION RESISTOR NETWORKS – RM SERIES



Susumu thin film resistor networks RM series

are thin film resistor networks that offer all the known features of the thin film single chip resistors (Susumu RG series), such as very tight tolerance and small temperature drift, excellent stability, low noise in high frequency applications and high temperature operation. It has the additional feature that resistance ratio matching is defined. Possible ratios reach from 1:1 up to 1:500 which are very difficult to realize in high precision with single chip resistors.

FEATURES

- » Case sizes from 0805 up to 2512
- » Available ratios: 1:1 ... 1:500
- » Resistance values: 100 Ω ... 500 k Ω
- » Ratio tolerances: 0.5% ... 0,01%
- » Ratio TCR: 1 ppm/ $^{\circ}\text{C}$... 5 ppm/ $^{\circ}\text{C}$
- » Operating temperature range: -55 $^{\circ}\text{C}$... +155 $^{\circ}\text{C}$
- » Custom values (outside E96) and housings available unmatched reliability and stability
- » AEC-Q200 certified

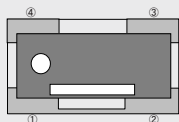
APPLICATIONS

RM networks are excellent suitable as voltage divider or for measurement and feedback circuits at different branches.

AVAILABLE STANDARD CIRCUITS

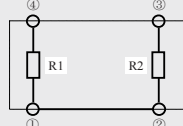
2 element

Top view and terminal number



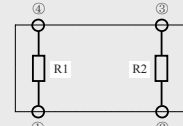
Circuit type code=A

Circuit



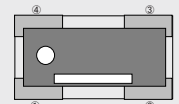
Circuit type code=B

Circuit



3 element

Top view and terminal number

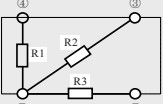
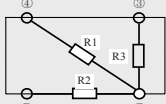
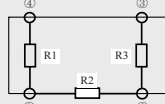


Circuit type code=C

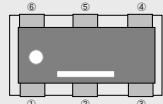
Circuit type code=D

Circuit type code=E

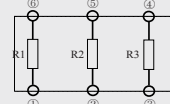
Circuit type code=parallel



Top view and terminal number

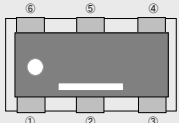


Circuit



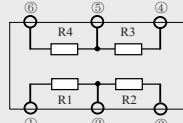
4 element

Top view and terminal number

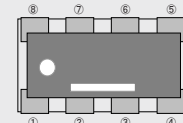


Circuit type code=custom

Circuit

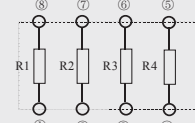


Top view and terminal number



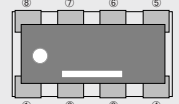
Circuit type code=F

Circuit



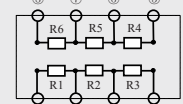
6 element

Top view and terminal number



Circuit type code=custom

Circuit



Please contact us for any special solutions such as resistance values, combinations, number of elements, size, etc.

Contact for information: Mr. Jung · Tel. +49(0)7452-6007-26 · e-mail: t.jung@endrich.com

HEADQUARTERS

ENDRICH Bauelemente Vertriebs GmbH · P.O.Box 1251 · D-72192 Nagold
 T +49 (0) 7452 6007-0 · F +49 (0) 7452 6007-70
endrich@endrich.com · www.endrich.com



SALES OFFICES IN EUROPE

France:

Angers: T +33/2 41 80 33 54 · v.rousseau@endrich.com
 Paris: T +33/1 46 05 99 13 · e.cosperec@endrich.com

Austria & Slovenia

Vienna: T +43/1 66 52 52 521 · a.schwaha@endrich.com

Hungary:

Budapest: T +361 / 2 97 41 91 · z.kiss@endrich.com

Bulgaria:

Sofia: T +359/2 874 30 49 · bulgaria@endrich.com

Switzerland – Novitronic:

Zurich: T +41/44 306 91 91 · info@novitronic.ch

Spain:

Barcelona: T +34/93 217 31 44 · spain@endrich.com